



RREUSE 2016 Activity Report



RREUSE IN A NUTSHELL



RREUSE is the European voice for social enterprises working in the field of re-use, repair and recycling

Our members help alleviate poverty and social exclusion through creating local green jobs, extending product life-times and valuing our resources

30 members in 18 countries represent

50 000
employees

90 000
volunteers & trainees

Our mission is to get the EU and national governments to stop only talking about recycling and instead put second-hand first

RREUSE IN A NUTSHELL

In 2015 RREUSE members diverted

1 000 000 TONNES

of material from landfill through re-use, repair and recycling, which included...



Furniture

230 000 tonnes collected

out of which
120 000 tonnes re-used

Textiles

240 000 tonnes collected

out of which
110 000 tonnes re-used

Electricals

260 000 tonnes collected

out of which
33 000 tonnes re-used

Books & Records

10 000 tonnes collected

out of which
4 000 tonnes re-used

Construction materials

15 000 tonnes collected

out of which
1 700 tonnes re-used

Bric-a-brac

19 000 tonnes collected

out of which
10 000 tonnes re-used

Around 7 000 shops welcomed 38 000 000 customers
contributing to an overall RREUSE member activity turnover of € 1 500 000 000

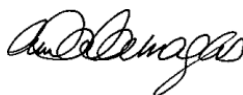
Foreword

2016 was a turbulent year for Europe marred by political and economic uncertainty and ever increasing gaps between the rich and the poor. Nearly 20 million people were unemployed and 120 million at risk of poverty and exclusion. Moreover, millions did not have the means to cover the costs of having a bed to sleep on, a sofa to sit on or a stove to cook on.



Yet in the face of such adversity, social enterprises working in the re-use, repair and recycling sectors worked tirelessly and resolutely to make a difference to individuals, their communities and the environment. This report shows how our members contributed to this. These activities must be at the heart of Europe's vision to promote a circular economy. Thanks to RREUSE, supporting the needs of the sector, we can see that European policy makers are listening to us. However, binding legal measures to develop these activities are needed beyond encouraging words in their communications.

We are not alone in embracing a vision toward a circular economy. However, the idea of a circular future cannot be left solely to those who have the most power to lobby and shape legislation in Brussels. EU policies must be supportive of local community based initiatives. As such RREUSE will continue to actively fulfill its part of championing the critical role social enterprises play in a circular economy. And its members will continue their essential activities in their communities.



Antigone Dalamaga
RREUSE President

Contents

1. OUR NETWORK

Best Practice of 2016
Events and membership
Communication

2. SHAPING EUROPEAN POLICY

Circular Economy
Re-use of textile in focus

3. PROJECTS

BIOHEC-LIFE
ReWEEE
RENEW2020
LawPreT

4. MEMBERS & SECRETARIAT

5. FINANCIAL REPORT

1. OUR NETWORK



In 2016, Spain became the first country to set a target to stop reusable goods ending up in landfill

The Spanish waste plan covering the period 2016 - 2022 set a 50 % target for waste to be recycled or prepared for re-use. Within that, 2 % of furniture, textiles, electricals, and other suitable goods, must be prepared for re-use. [Read more](#)

BEST PRACTICE OF 2016

SOCIAL ENTERPRISES IN AUSTRIA LAUNCH PROJECT TO HELP RE-USE CONSTRUCTION MATERIALS

Following the introduction of new regulations in Austria to promote re-use of construction and demolition materials, the Austrian social enterprise sector umbrella RepaNet launched project BauKarussell, a pilot initiative to help develop a market for building materials and components. [Read more](#)

REPAIR TRUCK 'TOUR DE FRANCE'

A repair truck, designed to raise awareness about the importance of re-use and repair, visited eight major French cities and offered workshops for citizens. Over one week they attracted 3000 visitors and drew attention of French press and television. The initiative was run by Envie, a French social enterprise re-use network employing 2500 people in 50 work integration social enterprises. [Read more](#)

NEW YORKERS CAN DONATE EASIER THANKS TO AN ONLINE PLATFORM

An online database and a mobile app were launched by the New York City's Department of Sanitation to help citizens localise the nearest place to donate all kinds of reusable items or shop second-hand. The platform makes it as convenient as never before for New Yorkers to avoid waste by providing detailed information including maps, opening hours and describing the missions of involved re-use organisations under the umbrella of donateNYC. [Read more](#)

1. OUR NETWORK

Our tri-annual network meetings, hosted by different RREUSE members allowed us to meet and discuss new experiences, understand better the development of the social economy in different Member States as well as discover new re-use and recycling initiatives across Europe.

Read what we learned about re-use in GHENT, AMSTERDAM and DUBLIN

EVENTS AND MEMBERSHIP



RREUSE welcomed a major Dutch association of social enterprises **Branchevereniging Kringloopbedrijven Nederland (bKN)**, to its network in 2016.

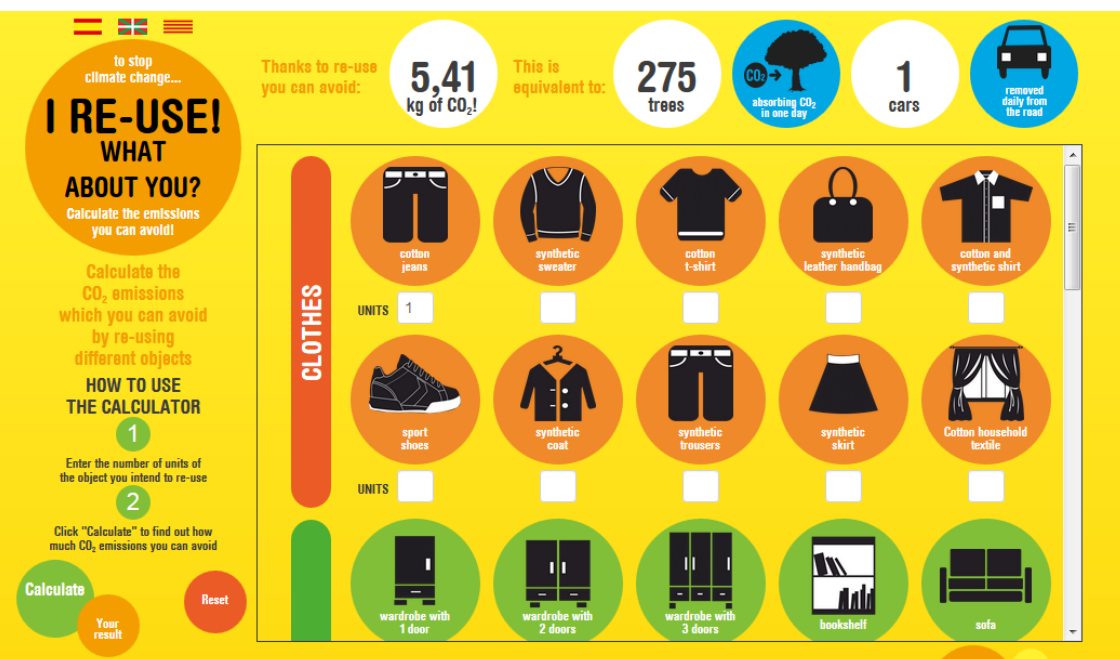
- The bKN has **65 members**, who operate almost **200 shops**
- Almost **12 000 people** work in these shops of which over 9000 are disabled, volunteers, on welfare etc.
- The network handles around **150 000 tonnes** of goods each year, of which the majority is re-used or recycled



1. OUR NETWORK

NEW TOOL SHOWS CO2 EMISSIONS SAVED THROUGH RE-USE Environmental benefits of re-use

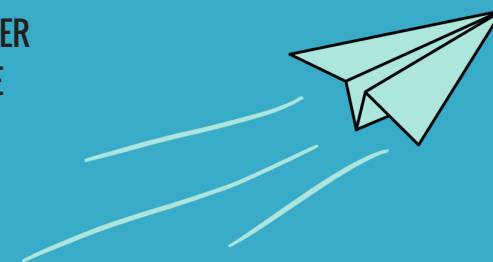
How big an impact does it make if you keep a product in use rather than throwing it away? A new [online calculator](#) that is available in English and has been developed by the Spanish re-use network of social enterprises AERESS helps answer this question.



Follow us to stay informed about re-use initiatives from our network and policy developments in Europe

COMMUNICATION

[READ OUR PUBLIC NEWSLETTER](#)
[SIGN UP FOR THE NEXT ISSUE](#)



REUSE MORE THROW LESS CAMPAIGN European Week for Waste Reduction 2016

In November, RREUSE organised its annual Reuse More Throw Less Campaign as part of the European Week for Waste Reduction. Over one week, re-use centres in four European countries weighed all donated goods collected and sold in their shops. At the end of each day, we added these numbers together to show the impact we had on waste reduction.

By communicating [how much we have saved](#) from ending up as waste, we wanted to show that we can not only save resources but also help to create local employment by donating used goods and buying second-hand. We achieved this by involving involve re-use shop visitors, employees and a wider audience.

www.rreuse.org



2. SHAPING EUROPEAN POLICY

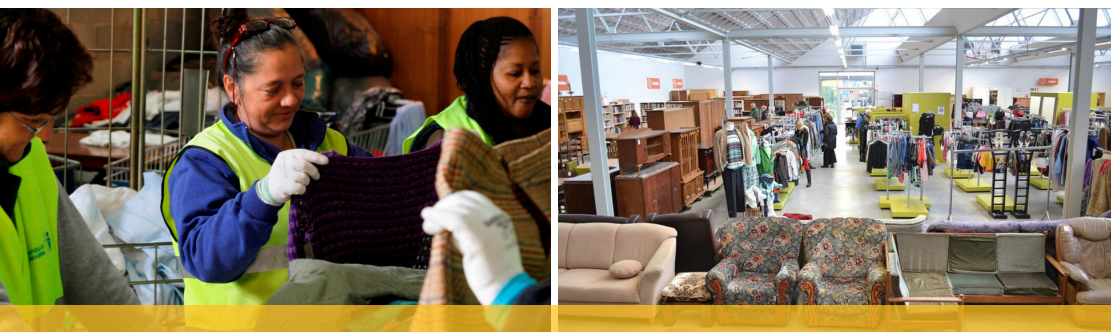
CIRCULAR ECONOMY

The RREUSE secretariat in Brussels actively advocated for better policies supporting the sector at European level.

Following a major publication of the European Commission's Circular Economy package, RREUSE continued advising EU policy makers and national governments to:

- Boost re-use of unwanted goods and divert them from going directly to landfill and incineration through waste policy
- Make repair cheaper and easier through policies including Ecodesign
- Support the specific economic role of social enterprises through sustainable public procurement and other measures

Read the complete position of RREUSE on Commission's Circular Economy proposals [here](#).



>> Social enterprises have significant potential for providing high quality employment in the circular economy with activities related to re-use, repair and recycling <<

European Commissions' Communication on Green Jobs 2014

COMMISSION OFFICIALS SEE RE-USE CENTRE IN ACTION

Officials from the European Commission department responsible for the Circular Economy Package were given a tour of a Belgian re-use centre De Kringwinkel followed by a round-table discussion. [Read more](#)

MEPs SEE BENEFITS OF RE-USE

A delegation of MEPs and European parliamentary staff toured a French re-use facility Envie in Strasbourg. [Read more](#)

GOVERNMENT EXPERTS SHARE BEST PRACTICE IN RE-USE POLICY

Innovative measures to promote re-use over recycling across Europe were highlighted at a high level event organised by RREUSE to facilitate knowledge exchange amongst national experts and re-use operators. [Read more](#)

2. SHAPING EUROPEAN POLICY

CIRCULAR ECONOMY

EU WASTE FRAMEWORK DIRECTIVE

RREUSE commenced work in pushing for clarifications and improvements to the EU Commission's proposals via the European Parliament and national governments who will scrutinize over the final text, likely to be concluded in late 2017. Specifically RREUSE has been strongly pushing for separate targets for preparing for re-use. The separate target would improve access for preparing for re-use operators to mountains of discarded goods which are currently being directly recycled, landfilled or incinerated. In order to promote this message, RREUSE circulated and diffused its positions via policy proposals, press releases, organization of workshops for policy makers, conference interventions and site visits.

EU WEEE DIRECTIVE

RREUSE has continued to fight for stronger support for re-use activities in legislation concerning waste electric and electronic equipment (WEEE) such as separate preparing for re-use targets, similar to those which now exist in Spain. Of note, RREUSE provided significant feedback to a feasibility study being carried out for the European Commission investigating the possibility of setting separate targets for WEEE re-use at EU level. RREUSE was also heavily involved in the current creation of standards in the field of treatment, collection and logistics, and preparing for re-use of waste electronics. This work has been mandated by the WEEE Directive and could have a major impact on re-use operators in the future.

EU ECODESIGN DIRECTIVE

RREUSE continued to assist the European Commission in its work on potentially setting repair-friendly criteria in implementing measures for products covered under the Ecodesign Directive. This includes washing machines, dishwashers and fridges. In this respect, RREUSE published a significant policy analysis of how a number of EU policies and regulations could be amended or better implemented to help support independent repair operators. Specifically RREUSE and its members have contributed to work by the Commission underpinning potential future requirements regulating the design of products to ensure ease of repair, especially for washing machines and dishwashers.



Commission report proposes measures for longer-lasting washing machines and dishwashers

The Commission's report has made use of a number of RREUSE publications and practical experience from our French, Belgian and Austrian members. [Read More](#)

2. SHAPING EUROPEAN POLICY

RE-USE OF TEXTILE IN FOCUS

PROMOTING TRANSPARENCY IN RE-USE OF TEXTILE

Whilst historically the collection of used clothes has been associated with charitable objectives, the sector has evolved to include a wide range of actors, both formal and informal in nature. Competition between these entities is significant during periods of high global demand for used textile, as recently witnessed between 2011-2014.



This explosion of new actors on the scene has resulted in little transparency and visibility about what happens to used clothes once citizens donate them, both in terms of their end-destination and what the profits are used for. It is becoming an increasing concern for citizens and municipalities.

In a bid to address this issue, RREUSE outlined some common ethical principles that social enterprises abide by in order to help improve their visibility.

13 kg

clothing on average purchased by each EU citizen¹

5.7 million tonnes of clothing

that could fill 5500 olympic swimming pools are thrown away every year in the EU²



120 000

local jobs could be supported if all discarded clothing was collected and sorted by social enterprises³

20 - 30 %

reduction of each carbon, water and waste footprint when extending life of clothes by just 9 months⁴



1 Calculation based on data from Eurostat and JRC (2009) Study on the selection of Waste Streams for End of Waste Assessment
2,3 RRFUSF (2015) Reducing our carbon footprint: the business sector
4 WRAP (2015) Textiles Market Information Report – Spring 2015

Read our position paper outlining ethical principles for clothing re-use sector [here](#)

3. PROJECTS

BIOHEC-LIFE

Used cooking oil and social enterprise

The [BIOHEC-LIFE project](#) aims to produce competitively-priced advanced biofuels derived from used cooking oils. This technical progress will provide locally-produced biofuel to the French local authorities' public transport fleets. The economic, social and environmental model of the production chain will be assessed in the city of Lille and Nord-Pas-de-Calais-Picardie region, and replicated in further French and European territories. The project is led by a social enterprise GECO that is active in collection and recycling of used cooking oil.



REWEEE

Better handling of waste electricals in Greece

The [ReWEEE project](#) (Life+) aims to prevent the creation of waste electrical and electronic equipment (WEEE). In order to achieve this objective, two WEEE sorting and re-use centers will operate for the first time in Greece, in the wider areas of Athens and Thessaloniki. The core activity of these centers is the collection, storage and sorting of WEEE depending on their condition and then their preparation for reuse or treatment.



LawPreT

Local authorities training in waste prevention

The [LawPreT project](#) (Erasmus+) provided waste prevention training to employees of local authorities in Greece, Cyprus and Slovenia. As a result the employees should be able to implement innovative waste prevention practices in their local or regional authority.

In June 2016 the project was finished with a final conference „Towards Zero Waste cities: How local authorities can apply waste prevention policies“ [Read more](#)

RENEW2020

Youth training in creative waste management

The [RENEW2020 project](#) (Erasmus+) promotes and supports the development of specific and professional skills of youth in the green economy and up-cycling sector. It creates a strategic partnership between European organizations with specific expertise in the field of youth training, auto-entrepreneurship, design creativity and waste management.

4. MEMBERS & SECRETARIAT

BOARD OF DIRECTORS

President Antigone Dalamaga, Ecological Recycling Society, Greece

Vice President Giorgio Rosso, Orius, Italy

Secretary Christian Wolf, RepaNet, Austria

Treasurer Pascal Monard, Envie, France

Harri Niukkannen, Tramel Oy, Finland

Claire Downey, Community Reuse Network, Ireland

Richard Jordan, Rehab Recycle, Ireland

Laura Rubio, AERESS, Spain

Craig Anderson, Furniture Reuse Network, FRN, UK

David Wood, Community Resources Network Scotland, CRNS, UK

Marleen Vos, Komosie, Belgium

Ton Doppenberg, bKN, Netherlands

SECRETARIAT

Michal Len **Director**

Paolo Ferraresi **Financial and Development Manager**

Mathieu Rama **Advocacy Officer**

Jana Žůrková **Network Coordination and Communications Officer**

Become a member of RREUSE !
More information [here](#)

RREUSE 26 Rue d'Edimbourg | B-1050 | Brussels | Belgium
+32 (0)2 894 46 14 | info@rreuse.org | www.rreuse.org

MEMBERS

AUSTRIA REPANET

BELGIUM KOMOSIE

PROSPER

RESSOURCES

BOSNIA AND HERZEGOVINA ASSOCIATION CITIZENS "HANDS"

CROATIA HUMANA NOVA

FINLAND TRAMEL

FRANCE EMMAÜS FRANCE

ENVIE

GREECE ECOLOGICAL RECYCLING SOCIETY

KLIMAX PLUS

HUNGARY HUMUSZ SZÖVETSÉG

IRELAND COMMUNITY REUSE NETWORK IRELAND

RECOSI

REHAB RECYCLE

ITALY FARSI PROSSIMO

ORIUS

RETE ONU

NETHERLANDS BRANCHEVERENIGING

KRINGLOOPBEDRIJVEN NEDERLAND

POLAND EKON

ROMANIA ATELIERE FĂRĂ FRONTIERE

SLOVENIA CENTER PONOVNE UPORABE

DOBROTE Z.B.O

SPAIN AERESS

SWEDEN MACKEN

UNITED KINGDOM REUSEFUL UK

FURNITURE RE-USE NETWORK

COMMUNITY RESOURCES NETWORK SCOTLAND

COMMUNITY COMPOSTING NETWORK

UNITED STATES OF AMERICA DONATENYC

5. FINANCIAL REPORT 2016

EXPENDITURE

EUR

Consultants	8.348,02
Office costs	19.252,90
Travel-Subsistence-Conferences	11.475,29
Staff	101.282,43
Depreciation	256,27
Interests/Bank charges	377,83
TOTAL	140.992,74
Exceptional charges	2.026,31

TOTAL Expenditure

143.019,05

INCOME

EUR

Foundations	22.500,00
Membership fees	59.550,00
European Commission	43.133,73
Other private contributions	17.800,00
Other income	1.629,37
TOTAL	144.613,10
Exceptional income	405,78

TOTAL Income

145.018,88

End of year result 2016

1.999,83



RREUSE is grateful for financial support from its member organisations, the European Commission's Erasmus+ programme, LIFE+ programme and the Fondation de France.



Our entry on the European Commission Transparency Register can be viewed [here](#).

The chapter 'RREUSE in a Nutshell' contains data from 2015, which was the latest complete available set of annual data reported by members at the time of publication of this report.